

6MP Autofocus Smart AI 40M IR Vandal POE IP Camera

AirCam VD-640MAI

airlive®



6MP
3072x2048

H.265
H.264

2.8-12 mm
Motorized
AutoFocus

4x optical
zoom

40M IR
D-WDR

RTSP
OnVif

DIDO
Connection

SD Card
Slot

Smart AI
Function

IK10/IP66

48V
PoE

Android IOS
APP Supported

Overview

Experience superior surveillance with our 6MP Autofocus 40M IR Bullet POE IP Camera, AirCam VD-640MAI - a state-of-the-art Smart AI surveillance solution. Achieve crystal-clear image quality with Autofocus technology. Benefit from powerful 40-meter infrared night vision, ensuring comprehensive coverage day and night. Enjoy easy installation via Power over Ethernet (PoE) for hassle-free setup and monitoring. Moreover, it is a Smart AI featured camera. Capture essential details effortlessly with this advanced IP camera, ensuring your security needs are met effectively.

Features

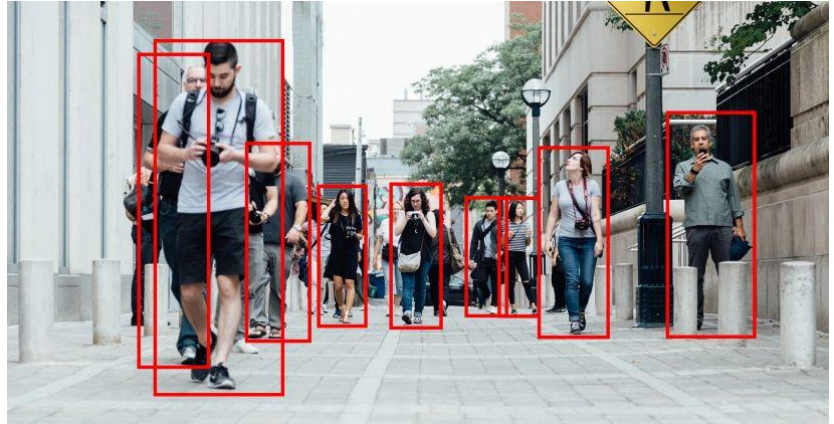
- High-Quality Imaging: Equipped with a 1/2.8" Sony CMOS sensor, delivering sharp 6MP HD resolution (3072 x 2048) output.
- Low Light Visibility: Excellent low-light performance with a minimum illumination of just 0.01Lux.
- Comprehensive Image Control: Features such as Day/Night, AWB/MWB, BLC, HLC, 2D/3D-DNR, Shutter, and IR-CUT for optimal image quality.
- Image Enhancement: D-WDR, Mirror, Rotate, and Defogging functions to improve image clarity.
- Customizable Overlays: Supports multiple Style OSD overlays, Motion Detection, and Privacy Mask for tailored surveillance.
- Compatibility: RTSP and Onvif 17.06 compatibility for integration with various third-party NVRs.
- Efficient Encoding: H.264/H.265 dual-stream media server for efficient video encoding.
- P2P Cloud Service: Easy-to-use P2P Cloud service for remote access.
- 4x Optical zoom.
- Security Features: User authentication and video data encryption for enhanced data protection.
- Alarm Handling: Supports Alarm Snapshot to Email and FTP for immediate event notifications.
- Versatile Access: Multiple access options including various web browsers, PC client, and mobile app for remote monitoring.
- IEEE802.3af PoE support for convenient installation.
- Lightning Protection: Equipped with 4000V lightning protection for added durability.
- Weatherproof Design: Robust IP66-rated housing for strong water-proofing.
- Powerful IR Illumination: Features 4 SMD array IR LEDs with a 40-meter IR distance.
- Motorized Lens: 2.8-12mm motorized lens for flexible focal adjustments.
- Alarm function: DIDO, Alarm in/out, Audio in/out
- MicroSD card supported, for local recording

IP Camera Smart AI feature - Smart Human/vehicle detection

Elevate your security with our AI-powered IP camera featuring advanced human and vehicle detection. This intelligent technology ensures accurate alerts, reducing false alarms. With precise identification, it enhances surveillance efficiency, making it ideal for safeguarding your premises. Stay one step ahead with smart, automated security.

Smart AI –Human Detection

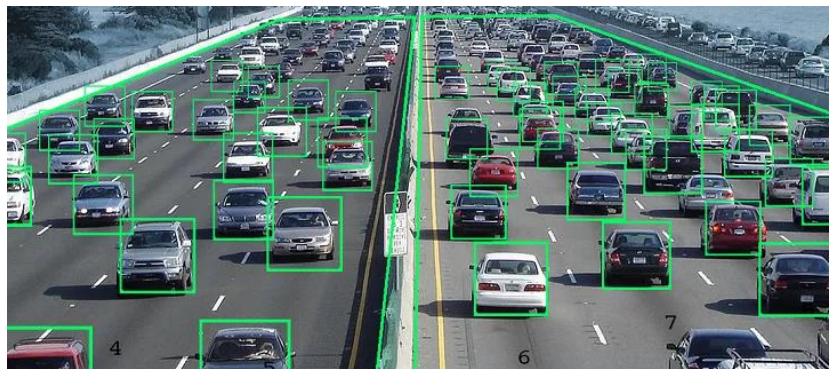
It uses advanced artificial intelligence and computer vision to identify and detect people in various scenarios, such as security, surveillance, retail, and entertainment.



Smart AI Vehicle Detection for Car and other vehicles

Its mainly to identify and detect vehicles in various scenarios, such as traffic management, parking, toll collection, and security.

Smart AI aims to provide accurate, reliable, and efficient solutions for vehicle detection needs.

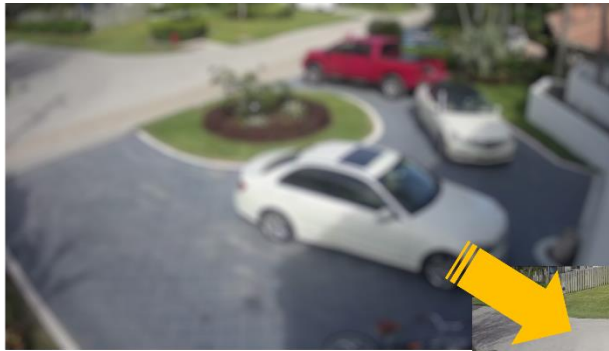


The AirLive Smart AI IP Camera functions

Offers Intelligent Detection for selected Detect targets, making it able to detect different targets like, humans, vehicles and more. You will only receive an alarm when the select target is detected, other motion will not trigger the camera. Thus, giving you a more secure and smart security solution.

2.8-12 mm Motorized Auto focus lens, 4x Optical Zoom

The AirCam VD-640MAI is equipped with a versatile 2.8-12mm motorized autofocus lens. This feature ensures precise focus adjustments, allowing for sharp and clear imagery without manual intervention. Enjoy effortless control over your surveillance, capturing every detail with ease and accuracy. Zoom in onto points of interest with the 4x Optical zoom.



Auto Focus Lens

Get a sharp clear image



Alarm Function with DIDO connector.

The AirCam VD-640MAI comes with a DIDO terminal block already attached, Depending on your needs, you can connect Digital Input or Digital Output devices to your camera, such as alarm, panic button, lights, etc.

Digital Input (DI) devices can be used to notify the camera about an activity at the camera location. DI can be triggers of events. For example, you can connect a “panic button” to the camera; as such when the panic button is pressed, the alarm signal will be sent through the camera. Other common DI device applications are emergency button, smoke detector, passive infrared sensor, etc.

Digital Output (DO) devices are external devices that are activated by the camera upon an event inside the camera. For example, you can connect an “alarm siren” to the camera; as such when an event happens inside the camera (for example intruder detected), the alarm siren will sound. Other common DO device applications are motion-triggered lights, electric fence, etc.



6MP Autofocus Smart AI 40M IR Vandal POE IP Camera

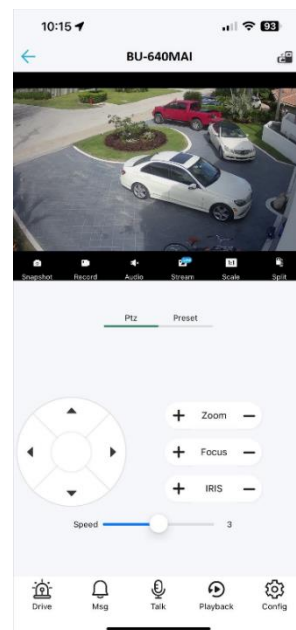
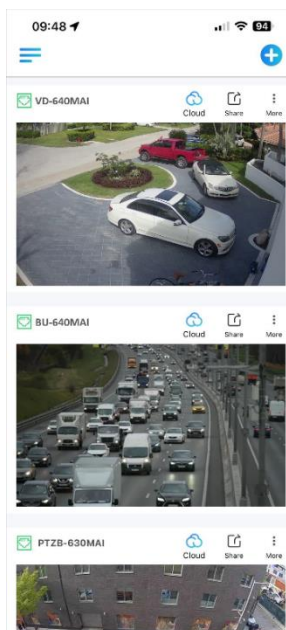
AirCam VD-640MAI

airlive®

IP Camera Android/iOS App Support App Search VideoLink

Our IP Camera boasts Android and iOS app support, providing convenient access to your surveillance system.

The user-friendly app, "VideoLink," allows you to effortlessly search and view video feeds. Stay connected and in control, monitoring your property from your mobile device with ease and convenience.



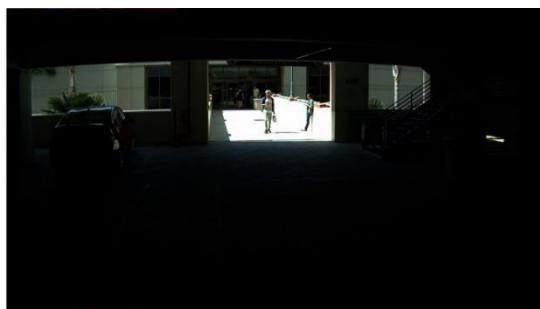
IK10-Vandal- proof Dome

The VD-640MAI Vandal-Proof Dome Camera offers superior security in a compact, durable design. With its robust construction, this IP camera withstands tampering and harsh weather conditions, making it ideal for outdoor surveillance. Ensure reliable protection for your premises with this resilient and high-performance dome camera.



Image Enhancement: D-WDR, Mirror, Rotate, and Defogging functions

The AirCam VD-640MAI takes image enhancement seriously, offering a suite of advanced features. Digital-Wide Dynamic Range (D-WDR) balances exposure, ensuring well-lit scenes in challenging lighting conditions. Additionally, it provides the ability to mirror and rotate images as needed, enhancing flexibility in surveillance placement. Furthermore, the integrated Defogging function improves visibility in misty or foggy environments, ensuring that you get clear, detailed footage regardless of adverse weather conditions. These features collectively enhance the camera's performance and its suitability for various monitoring scenarios.



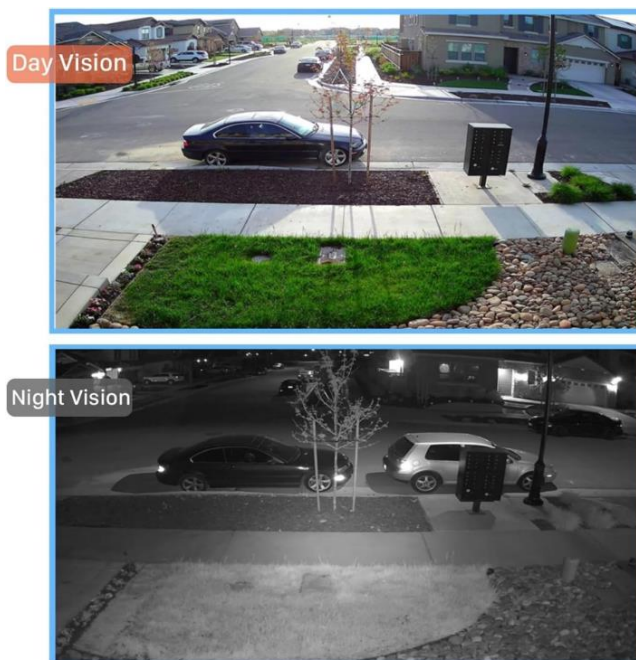
WDR OFF



WDR ON

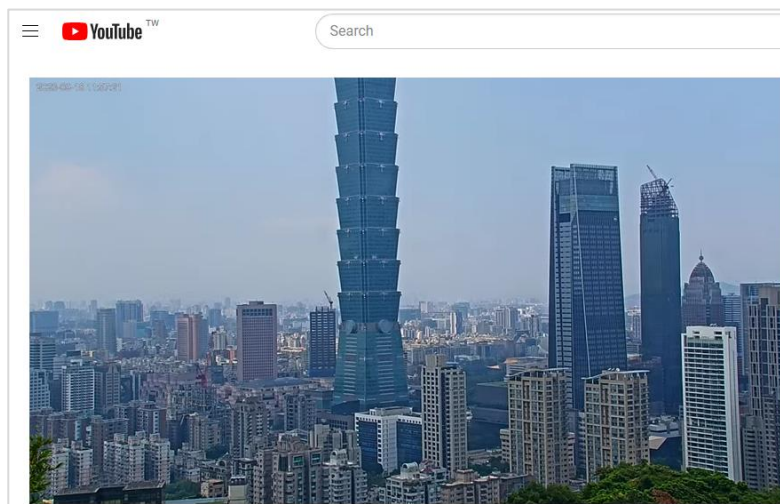
AirCam VD-640MAI 4 SMD array IR LEDs with a 40-meter IR distance

The AirCam VD-640MAI is equipped with 4 SMD array IR LEDs, delivering powerful infrared illumination. With an impressive 40-meter IR distance, it ensures exceptional night vision capabilities, providing clear and detailed surveillance footage even in complete darkness. Whether it's monitoring large outdoor areas or dimly lit spaces, this camera guarantees reliable 24/7 security coverage, making it a robust choice for various applications.



Streaming your IP Camera to Youtube live

Streaming your IP camera to YouTube Live. Once configured, start the camera's live streaming function, and your surveillance feed will be broadcasted in real-time on your YouTube channel, allowing you to share or monitor events remotely with ease. This function can also be used to Live stream landmarks or other places of interest to a global audience and let people from all over the world enjoy your country.



Model	AirCam VD-640MAI
<p>Interface</p> <ul style="list-style-type: none"> • Network Interface: PoE 802.3af 1x RJ45 10M/100M • Media: AirCam64, Android, IOS • Onvif: 17.06 compatible • Standard: HTTP/RTSP/FTP/RTMP/SMTP/DHCP/NTP/NFS <p>Camera</p> <ul style="list-style-type: none"> • Image Sensor : 1/2.8" Sony CMOS • CPU: Sigmastar • Effective Pixels : 6 megapixels • Electronic Shutter : Auto, 1/25s ~ 1/100000s • Min. Illumination : 0.01Lux@F1.2(AGC ON), 0Lux IR on • Day/Night : Auto/Color/(B/W)/Timing • WDR : Digital WDR • White Balance : Auto/Manual • BLC /HLC : Support • DNR : 2D/3D DNR • Other : AGC, Motion Detection, Privacy Mask , Flip ,OSD overlay • Mechanical: IK-10, Waterproof IP66 Housing <p>Encode</p> <ul style="list-style-type: none"> • Video Standard : H.264/H.265/H.265+ • Video Resolution : Main Stream: 25fps@6MP(3072x2048)/5MP(2592x1944)/4MP(2592x1520)/3MP, 30fps@1080P/720P Sub stream: 25fps@D1/VGA/360P/CIF, etc. • Video Bitrates : 512Kbps - 12Mbps, VBR/CBR • Audio Standard : G.711-u/G.711-a • Microphone: Mic can be connected via Audio IN (Mic not provided) • OSD Overlay: Title and Time overlay • IR Led: 4 pcs Array IR Led • IR Distance: 40 Meters • FOV : 1/2.8 123° x 101.9° x 53.2° ~ 38° x 33.1° x 18.6° (D x H x V) ±5%, 2.8~12mm • Lens Focal length : 2.8-12 mm Motorized lens • Zoom : 4x Optical Zoom • Alarm Function: DIDO Alarm in/out, audio in/out. • Support MicroSD: Up to 256GB • Motion Detection: Schedule/Detection area/Trigger Recording/Trigger Snapshot/Link Blink/Upload Alarm Centre/Trigger Audio • Intelligent Detection: Human/Car/Motorcycle/Bicycle/Day/Night/Draw Rect in Video/Target Detection Rect/Day Sensitivity/Detection Rect Blink/Light Blink/Trigger Audio 	<p>Multiple Language</p> <ul style="list-style-type: none"> • English/Chinese/Russian/Deutsch/Italiano/Türkiye/Polksi/Korean/Greek/Arabic/Japanese <p>APP and Software Control</p> <ul style="list-style-type: none"> • Windows: Web browser, AirCam64 • iOS/Android: Download "Videolink" App from APP/Play Store) • *NVR APP iOS/Android: Download "Guard Viewer" App from APP/Play Store, (can be used when camera has been added to ANVR.) <p>Power Input</p> <ul style="list-style-type: none"> • Power Supply: 12V DC • Power Consumption: ≤8 W • PoE: 802.3af <p>Environment</p> <ul style="list-style-type: none"> • Operating temperature: -30°C ~ +60°C • Operating Humidity: 10% ~ 90% (non-condensing) <p>Standard package of Camera</p> <ul style="list-style-type: none"> • Product size: φ132 x 103.9mm Weight: ≤TBD • Package size: TBD cm(L*W*H) • Package content: TBD IP Camera/Network cable/QIG/waterproof connector <p>Ordering information</p> <ul style="list-style-type: none"> • AirLive VD-640MAI 6MP Autofocus Smart AI 40M IR Vandal POE IP Camera

* Specification will be changed without prior notice

* All trademarks, logos and brand names are the property of their respective owners.

